

**LEVEL
UP**



**TO
4TH**

WELCOME TO 4TH GRADE!

PARENTS, DID YOU ...

- | | |
|--|--|
| <input type="checkbox"/> Return all forms? | <input type="checkbox"/> Submit shot records? |
| <input type="checkbox"/> Send me a family photo? | <input type="checkbox"/> Bring school supplies? |
| <input type="checkbox"/> Add my cell number to contacts? | <input type="checkbox"/> Sign up for Class Dojo? |

WHAT TO EXPECT THE FIRST FEW WEEKS OF SCHOOL.

- Focus on rules. procedures
- Please be patient. The first 2 weeks will have longer lines until everyone learns the procedures.
- Do NOT park and come into the school at dismissal.
- Follow arrival and dismissal rules to ensure a safe transition.
- Parents can only walk their child to class on the 1st 3 days of school.
- Arrivals begin at 7:15am. After 1st 3 days, please stay in your car and follow the car line procedure.
- Make sure your child has their name and teacher's name on their backpack.

AUGUST IS AWESOME!!



**BEE A
MATH
STAR!!**

**AND A
SUPER
SCIENTIST!**



REQUIREMENTS

MATH

- Parts
- Parts
- Parts
- Parts
- Parts
- Parts



SCIENCE

- Parts
- Parts
- Parts
- Parts
- Parts
- Parts

ACADEMIC FOCUS

Aug 17-21: Parts of a book, count words in sentence, magnets, patterns:

Aug 24-28: Begin classroom jobs. Learn parts of a computer poems that rhyme

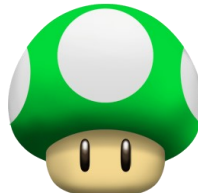
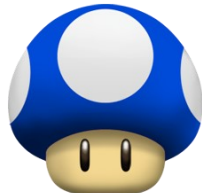
IMPORTANT DATES

13th Wear Day

20th Wear Day

27th Wear

Fri 28th and Mon 1st:
NO SCHOOL



SEPTEMBER

WE ARE
KICKIN' IT

OLD
SCHOOL



ACADEMIC FOCUS

Sept 10-14: Community Helpers, 5 senses, rhyming. **Color:** Red **Shape:** Circle

Letter: Mm, **Number:** 1

Sept 17-21: Parts of a book, count words in sentence, magnets, patterns: **Color:** Blue **Shape:** Square, **Letter:** Ff, **Number:** 2

Sept 24-28: Begin classroom jobs. Learn parts of a computer poems that rhyme
Color: Yellow, **Shape:** Triangle, **Letter:** Ss, **Number:** 3

IMPORTANT DATES

6th Goals Night 6:30-7:30

7th Grandparents Day

13th Wear Day

20th Wear Day

27th Wear Day

Fri 28th and Mon 1st:



OCTOBER

IS SCARY GOOD



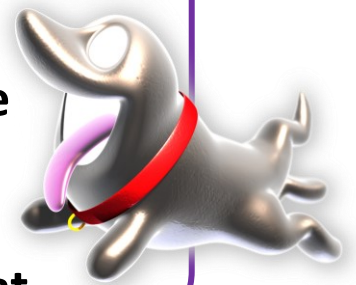
ACADEMIC FOCUS

- Sep 30- Oct 4: Review Week
- Oct 8-11: N/5/Purple/Oval
- Oct 14-18: A/6/Pink/Diamond
- Oct 21-25: D/7/Grey/Pentagon
- Oct 28-Nov 1: V/8/Black/Hexagon



IMPORTANT DATES

- Oct 8 Literacy Night
- Oct 7 No School: Fair Day
- Oct 17 Pumpkin Project Due
- Oct 24 Early Release
- Oct 25 No School
- Oct 31 Teach or Treat



Daily Events

- Mon. 28: **“My Future is Bright”**
(Wear sunglasses & bright or neon clothes)
- Tues. 29: **“Give Drugs the Boot”**
(Wear boots or western wear
No holsters with toy guns)

Living Drug-Free

RED RIBBON WEEK

Oct. 28-Nov 1

Wed. 24: **“Bee Drug Free”**
(Wear black and yellow clothes)

Thurs. 25: **“Real Heroes Don't Do Drugs”**
(Wear Superhero shirt or cape
No Masks or full costumes)

Fri. 26: **“Team Up Against Drugs”**
(Wear team jersey or shirt)

HAPPY THANKSGIVING FROM OUR FAMILY TO YOURS



IMPORTANT DATES

Thurs. 7th: Wear College Shirt Day
Thurs. 9th: **Fall Pictures**
Mon. 12th: 9am **Veteran's Parade**
Wear Red, White & Blue
Tues. 13th: 6pm **PTA Meeting**
Thurs. 14th: Wear College Shirt Day
Thurs. 28th: Wear College Shirt Day



Thanksgiving
Break

Nov 19-23
No School!!

ACADEMIC FOCUS

Nov 5-9: Math: **L** Science: **L**
Nov 12-16: Letter: **C**
Nov 19-23: Thanksgiving Break
Nov 26-30: Letter: **H**



December

IMPORTANT DATES

Fri. 13: Polar Express/Wear PJ's
Picture Retake Day

Tues. 17: Holiday Performance

Fri. 20: Holiday Party

Normal Release 3:00 - 3:30pm

Dec 23 – Jan 8:

WINTER BREAK



ACADEMIC FOCUS

Dec 2-6: Santa's Workshop Letter: Hh #: 11 Color: Green Shape: Review

Dec 9-13: Workshop Letter: Yy Number: 12 Color: Gold Shape: Review

Dec 16-23: Holiday Traditions Letter: Ll Number: 13 Color: Silver

KICKING OFF JANUARY WITH EXCITEMENT!



IMPORTANT DATES

Thur 10: Report Cards Go Home
Tues 15: PTA/ Math Night 6-8pm
Fri 18: Picture Retakes
Mon 21: Martin Luther King
No School

ACADEMIC FOCUS

Jan 8-11 Body and Senses Rr/15
Jan 14-18 Food and Exercise Zz/16
Jan 21-25 I Can Do It Ii/17
Jan 28- Feb 1 Safety and Health Tt/18
Review: /Color/Shape/letters

100

Days of School
is coming in Feb.

Make a poster, hat or shirt with 100
Items of your choice for our parade!





February



ACADEMIC FOCUS

Feb 4-8 Pets Bb/19

Feb 11-15 Farm Animals Jj /20

Feb 18-22 Wild Animals Qq

Feb 25- Mar 1 Creepy Crawlies Ww

Valentine's EXCHANGE

Thur., Feb 14 • 9am

Decorate your box at home
& bring it on the 14th!

IMPORTANT DATES

Tues 5: 100 Day Parade

Mon 11: Spring Picture Day

Thur 14: Early Release 11:30am

Parent Conferences - Sign up!

Mon 18: No School

Mon 25: Black History Program

6:30-8pm

BLACK HISTORY SPECIAL EVENTS

Mon 25th • 6:30pm



ACADEMIC FOCUS

2-6: Insects: Habitats

16-20: Fun with water

23-27: Oceans

30-3: Lakes & Shores

IMPORTANT DATES

Thur. 5th
Report Cards Go Home

Tues. 17th
PTA meeting 6pm

Thur. 26th
Wear Purple

Monday, March 2

Cat in the Hat Day! Wear a silly hat.

Tuesday, March 3

Green Eggs and Ham! Wear green.

Wednesday, March 4

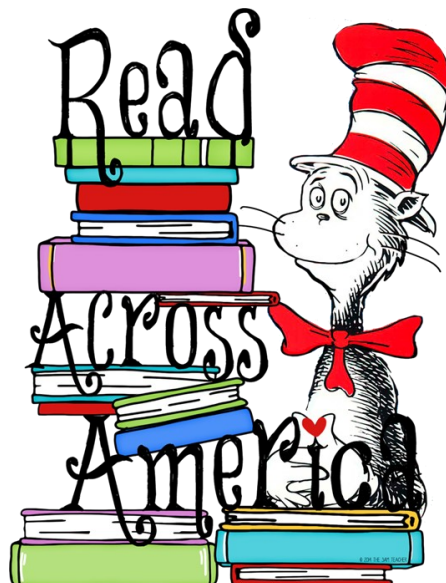
Wacky Wed! Wear clothes inside out.

Thursday, March 5

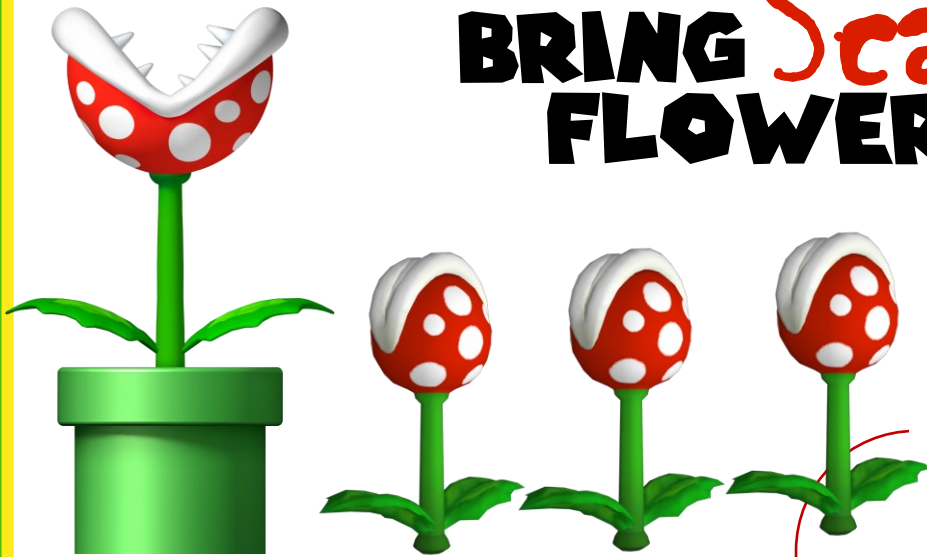
Cozy up to a Good Book! Wear PJ's.

Tuesday, March 6

Fox in Socks! Wear crazy socks.

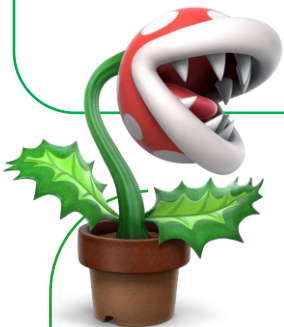


APRIL SHOWERS BRING *Scary* FLOWERS



IMPORTANT DATES

Only pre-authorized adults
may be a volunteer
for our upcoming trip.



ACADEMIC FOCUS

April 1-5: **Rain and Snow. Xx 5's**

April 8-12: **Sun and Clouds. 10's**

April 15-19: **In the Sky.**

April 22-26: **The Four Seasons.**

April 29-May 3: **Splash and Dig.
Water and Landforms.**

IMPORTANT DATES

Tues, April 2: Autism Awareness
Wear **BLUE**

Fri, April 5: Cap & Gown Pictures
Wear **BLUE**

April 8-12: **Book Fair**

Tues, April 9: PTA/ Science Night

Fri, April 12: Autism Awareness
Wear **BLUE**

Fri, April 19: **No School**

Mon, April 22: **FINAL Day** for Field
Trip Money &
Permission Slip

Fri, April 26: Autism Awareness
Wear **BLUE**
PTA



HURRAH! IT'S MAY!! TIME FOR A...



MARIO PARTY



IMPORTANT DATES

Only pre-authorized adults
may be a volunteer
for our upcoming trip.

IMPORTANT DATES

Tues, April 2: Autism Awareness
Wear **BLUE**

Fri, April 5: Cap & Gown Pictures
Wear **BLUE**

April 8-12: **Book Fair**

Tues, April 9: PTA/ Science Night

Fri, April 12: Autism Awareness
Wear **BLUE**

Fri, April 19: **No School**

Mon, April 22: **FINAL Day** Field
Trip Money &
Permission Slip

Fri, April 26: Autism Awareness
Wear **BLUE**



ACADEMIC FOCUS

April 1-5: **Rain and Snow. Xx 5's**

April 8-12: **Sun and Clouds. 10's**

April 15-19: **In the Sky.**

April 22-26: **The Four Seasons.**

April 29-May 3: **Splash and Dig.**

